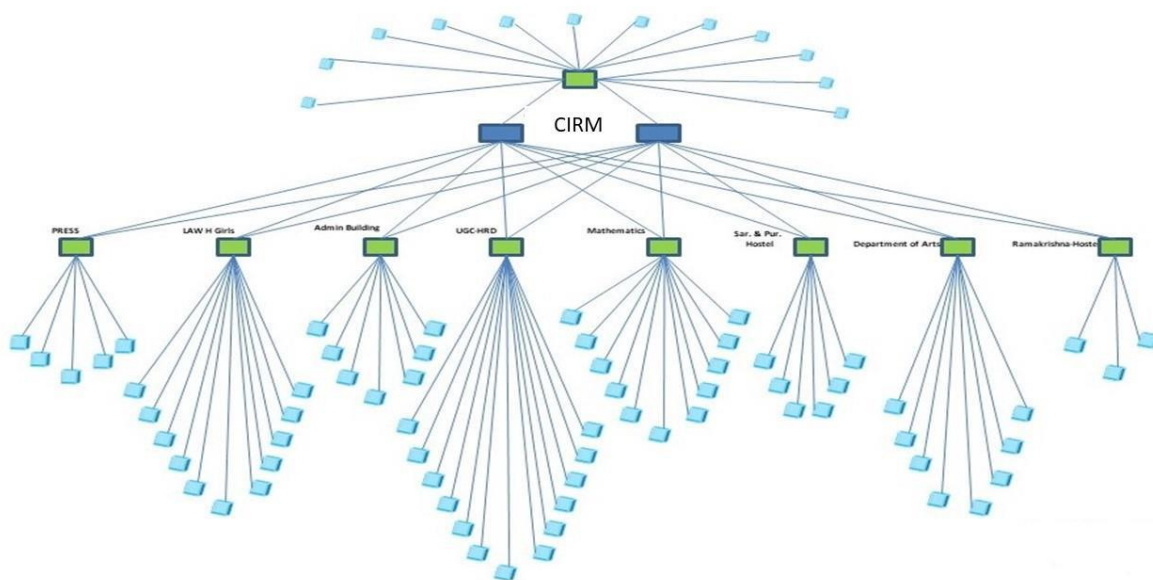


Campus LAN & Internet Infrastructure

Table of Contents

NBU Campus LAN and Internet Infrastructure	2
Major Network Equipment	4
Connect with NBU Network	5

NBU Campus LAN and Internet Infrastructure



The University Network is an infrastructure of electronic and optical distribution hardware, control software, and wired and wireless media. The University network utilizes various technologies to transport data. The University network begins at the point where an end-user device gains access to this infrastructure and ends at the point where the University network attaches to external non-NBU networks.

The priorities for the University network are

- ✚ safety
- ✚ security
- ✚ economy
- ✚ reliability and
- ✚ capability

The University's goal is to ensure the integrity and stability of the University network, as well as the efficiency and effectiveness of its construction and operation.

Providing a centrally managed enterprise class campus wide network is most effective and efficient method for achieving University's goals in information transport. This reduces the total cost of ownership to the University and promotes the availability and reliability of its information transport systems for all users. Through central planning and management, the University ensures that the network infrastructure is constructed and operated in an integrated, effective, and efficient manner.

The University network is for the use of the University as a whole and is managed for the benefit of all University users. Therefore, the network is designed and implemented to handle a wide variety of

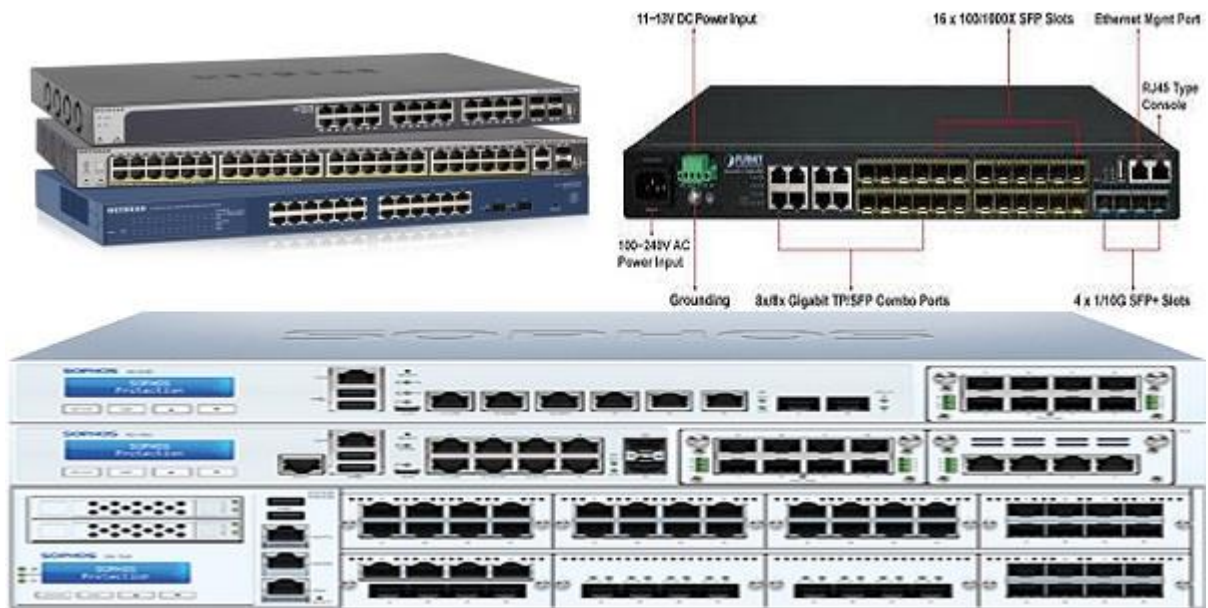
information transport requirements. This network is designed to satisfy most user needs for the transport of information. The campus-wide network supports IP-based CCTV and a state-of-the-art WiFi System.

- ✚ Active/Active failover with network load balancing.
- ✚ 10 G BACKBONE (Core to Distribution) & 1G Backbone (Distribution to Access)
- ✚ Centrally Managed Network System.
- ✚ Secured, Managed & Monitored Internet Access.
- ✚ Strong User Authentication policy.
- ✚ Policy driven network.

ISP	Capacity	Remarks/ Type
BSNL (NME-ICT NKN Project)	1Gbps	Support redundancy
Vodafone	400Mbps	

Redundant, Resilient, Upgradable, centrally managed are the state of the art network architecture

Major Network Equipment



Equipment	Quantity
L3 Core Switch	01
L3 Distribution Switch	09
L2 Access Switch (POE)	33
L2 Access Switch (Non POE)	15
UTM	01

Connect with NBU Network

All individual users should use their own authentication token to use the University Network either on LAN or on wireless or through VPN. Users can apply for the credential by simply clicking “Apply for Campus Connect” on <https://nbu.ac.in/qls/remoteAccess.aspx>

User Manual is available at <https://nbu.ac.in/doc/qls/NBU-LAN-Manual.pdf>